



Elloughton School News

The Newsletter of
Elloughton Primary School



November 2024



Word from the Headteacher

I recently accompanied our Year 6 pupils to East Barnby on their residential visit. The children were full of enthusiasm, and eager to take part in a range of outdoor adventurous activities - beak scrambling, mountain biking, canoeing, climbing, orienteering, walking and exploring the seashore. They all had a memorable week and came back full of tales about their adventures. As always the children flourished in so many ways. Understandably some were feeling slightly nervous and anxious as they set off from school, the prospect of being away from home for a whole week seemed rather daunting and a challenge in itself. However, as the week progressed it was a delight to see the children thrive, grow in confidence and independence. Together they achieved so much and returned to Elloughton completely shattered yet buzzing with excitement along with a bag full of unforgettable memories and lots of wet, dirty washing. A super week was had by all!

We now turn our attention to the forthcoming Christmas events. Thank you to FESA for organising the Christmas Market on Friday, a lovely evening and a wonderful way to start the festive season. Thank you for all the donations of prizes to help make the event a success. Our choir were once again a delight to hear and most definitely wore their Elloughton badges with pride as they sang so beautifully and spread some Christmas cheer.

I look forward to seeing many of you at the planned Christmas events as your children perform and delight us all.

Warmest wishes

Mrs Fulstow



Governor of the Month - Clare Chaffe

This year are continuing with our Governor of the Month initiative and each month the nominated governor will enjoy a 'Back to School Day', shadowing a child so they can experience life at Elloughton through the eyes of a child!

This month Claire had the pleasure of being with Grace in Year 4, who brilliantly chaperoned her throughout the day, telling her lots about life at Elloughton School. Here's a few words about her day.

"Going back to school was quite nerve-racking for me as I never really enjoyed school myself but all the children made me feel welcome, my favourite bits of the day were when we played "Round the world" the children were so quick at recalling their timetables, Teddy certainly showed me up as his recall of his timetables was brilliant. Another favourite moment was when we played Pineapple, again the children had only just been given their spellings for the week and they were so confident at calling the letters out as they went round in a circle. It was a pleasure to be in class with them"



GOVERNOR OF THE MONTH
= NOVEMBER =

Clare Chaffe

Why did I choose to be a governor at Elloughton?
I chose to be a Governor to develop skills that will help me in my job, as well as allow me to understand primary school education better. I also chose Elloughton for its reputation and because I like their vision and values.

My favourite thing about being a governor is...
I love to visit school and see the wonderful work that all the children do, as well and listen to the high aspirations all the teachers have for the school community.

All about me!
I am an Assistant Principal at a Local Further Education College. I have been in teaching and education for 14 years and before that worked in the Animal Industry as an Animal Behaviourist and Trainer. I have 2 boys who are 4 and 5 as well as 3 dogs. We also have fish and a Crested Gecko. If I could, my house would be full of animals!

In my spare time I love getting outdoors and going away with my family as well as going to the gym. I also love to curl up on the sofa and watch a film with my boys.



Parking Outside School

Can parents please park legally and respectfully at school drop off and collection.



It is an offence to park on zig-zag lines outside school or near pedestrian crossings, regardless of the time. This offence and other road traffic offenses can be reported by you and investigated through Operation Snap! [Click here](#) for more information about Operation Snap.

Operation Snap is a [secure online platform](#) that allows you to submit video/photographic evidence of driving offences that you or other members of the public have witnessed.

Its purpose is to improve road safety and to prosecute those that place others at risk. The service has been produced with the support of the Department for Transport.

Let's keep our children safe!



Calling all Volunteers

If any parent or grandparent, or you know a willing member of the local community who would like to help in school in some way this year, on an occasional or regular basis e.g. listening to readers, helping with classroom activities, supporting FESA, please get in touch. We'd love to hear from you.



The Royal British Legion Poppy Appeal

Thank you for your generous donations for the Poppy Appeal, we raised a total of £99.47.



Bags2School

We were presented with £30 cheque for Bags2School donations.

We will send bags home with children again in December.

Please fill a bag or two if you are having a clear out over the Christmas holiday, when your bags are full bring them to the school office.

Thank you for your support!



Children In Need

Thank you for supporting this years Children In Need, by 'Wearing Something Pudsey' we raised a whopping £398.



Term and Holiday Dates 2024/2025

Autumn Term

Closes Friday 20th December 2024

Spring Term

Opens Tuesday 7th January 2025

Closes Friday 14th February 2025

Re-opens Monday 24th February 2025

Closes Thursday 3rd April 2025

Summer Term

Opens Tuesday 22nd April 2025

Closed Monday 5th May 2025
(Bank holiday)

Closes Friday 23rd May 2025

Re-opens Monday 2nd June 2025

Last day Friday 18th July 2025



Teacher Training Days
Monday 2nd September 2024
Monday 6th January 2025
Friday 4th April 2025
Monday 21st and Tuesday 22nd July 2025

Term and Holiday Dates 2025/2026

Autumn Term

Opens Wednesday 3rd September 2025

Closes Friday 24th October 2025

Re-opens Monday 3rd November 2025

Closes Friday 19th December 2025

Spring Term

Opens Tuesday 6th January 2026

Closes Friday 13th February 2026

Re-opens Monday 23rd February 2026

Closes Thursday 26th March 2026

Summer Term

Opens Monday 13th April 2026

Closed Monday 4th May 2026
(Bank holiday)

Closes Friday 22nd May 2026

Re-opens Monday 1st June 2026

Last day Friday 17th July 2026

Teacher Training Days
Monday 1st September 2025
Tuesday 2nd September 2025
Monday 5th January 2026
Friday 27th March 2026



School Meals

School meals should be booked at home on Reach More Parents, we are seeing an increase in children coming to school without a meal booked and no packed lunch. The support staff are having to book the children's meals, sometimes with insufficient funds, this takes up valuable time when your child should be learning as well as the admin teams time chasing payment.



Communication Reminder

Please remember to use send@epsch.co.uk for matters relating to pastoral and SEND. If a message is for Mrs Bates, Mrs Stillings or Mrs Robbins this is the channel to use.

Messages sent via RMP to individual staff relating to pastoral/SEND matters will not be responded to as this not the appropriate forum to send such messages.

Thank You!

Reverse Advent Foodbank

This year our Christmas Appeal will be a reverse advent calendar for class to gather items for Hull Foodbank. Each class has been given a box to decorate in wrapping paper and each child should bring home a slip with a suggested item to donate (from 2nd - 13th December). Your child may choose to bring a different item if they wish - the important thing is to focus on the gift of giving, All donations to be in the class box by 16th December when the boxes will be collected and taken to the foodbank.



Asda Cashpot for Schools

Thank you!

Together we have raised

£273.16

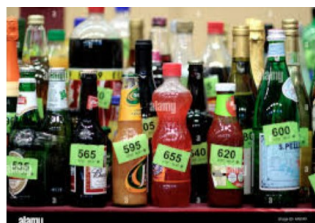
Elloughton Primary School

🕒 Completed!



Christmas Market

Thank you for all the bottle, jarbola and chocolate donations for the Christmas Market. It was a wonderful night and our class stalls raised a whopping £1,500.



School Cycled

Please keep bringing in your plastic lids for recycling, thanks to everyone who's sent us in a collection: It's been another busy month here with 1.88 tonnes received across 162 collections; that's around 3 tonnes of CO2 saved.

I wanted to share a clip of some plastics being recycled here in Hull.

While the clip shows cosmetic waste, it's the same process we use to recycle the bottlecaps

you send us: <https://www.youtube.com/watch?v=fYFkDn8llo>

Rob Aitken

Schoolcycled Ltd

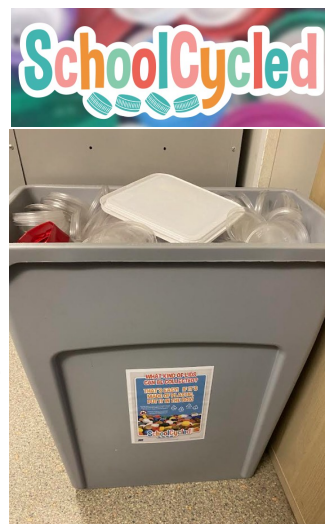
Here's our current balance and environmental benefits/savings which we will be able to use to buy products made from recycled plastic.

Your Balance: 40,669

Total Plastic Recycled: 343kg

Total Bottlecaps collected: 114,219

Total Weight Collected: 563kg



Moral Compass – Assembly Focus– Teamwork



During November we focused on the value of Teamwork. The ability to work together with others as part of a team is not simply a skill needed at school; it is a vital skill used and needed in all areas of life. In school the children experience teamwork in many different forms. Whilst children will experience team based activities at school, it is important to continue the ethos of good teamwork at home too.



Spreading Christmas Cheer

We're encouraging children to send Christmas cards to a class rather than every pupil within a class. You may prefer to donate money to charity!



Polite Reminder

Please remember to leave promptly from the playground after the school day. If you are waiting to collect older siblings please ensure you are supervising younger children at all times. Sadly we have recently received another complaint about children's behaviour towards others.



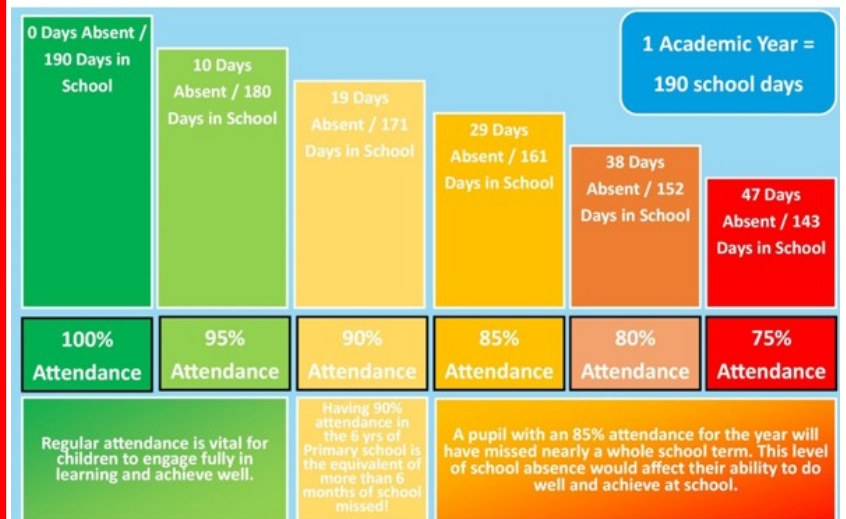
After School Activity Clubs

Please remember we do not run the After School Activity Clubs the first week back or the last week of half term.

Please do not book your child into the After School Club following an Activity Club (4.30 – 6.00pm) for the first or last week) If you have booked this already, please cancel.



How does school attendance impact a child's learning?



Important Dates

3rd December	EYFS Special Visitor in the forest 3.15pm
4th December	Invite a Special Person for Lunch
5th December	Year 1 /2 Winter Warmer Café. Year 1 2.15pm –3.00pm, Year 2 1.15pm – 2.00pm Nursery Visit to Brough Library
9th December	KS2 Theatre trip – The Borrowers
10th December	KS1 Theatre trip – Beauty and the Beast Nursery New Starters – Come and Play 3.30pm
11th December	EYFS Nativity for parents 1.30pm Christmas Choir–Brough Golf Club
12th December	Invite a Special Person for Lunch EYFS Nativity for parents 5.00pm
13th December	Christmas Lunch and Christmas Jumper Day
16th December	Last day for Reverse advent donations Nursery Christmas Stay & Play 9.10am
18th December	KS2 Church Services at St Marys - Year 3/4 1.15pm and Year 5/6 2.15pm (Parents and grandparents welcome)
19th December	Make a Gift for Someone Special (FESA)
20th December	Invite a Special Person for Lunch End of Autumn Term

